



Offering Memorandum

The Enclave

1226 N. Fuller Ave. West Hollywood, CA 90046

Multifamily Investment Opportunity

FOR SALE

PROPERTY WEBSITE

lucrumre.com



EQUITY
UNION
COMMERCIAL



Investment Contacts

The Enclave

Lucrum Group | Equity Union

Raymond Rodriguez

Founding Partner

D: +1 866-582-7865

M: +1 818-581-5829

ray@lucrumre.com

Lic. #01402283

Matt Freedman

Partner

D: +1 818-755-5551

M: +1 818-585-6888

matt@lucrumre.com

Lic. #01487954



Disclaimer

All materials and information received or derived from EQUITY UNION and Lucrum ("Broker") its directors, officers, agents, advisors, affiliates and/or any third party sources are provided without representation or warranty as to completeness, veracity, or accuracy condition of the property, compliance or lack of compliance with applicable governmental requirements, develop ability or suitability, financial performance of the property, projected financial performance of the property for any party's intended use or any and all other matters.

Neither Broker its directors, officers, agents, advisors, or affiliates makes any representation or warranty, express or implied, as to accuracy or completeness of the material or information provided, derived, or received. Materials and information from any source, whether written or verbal, that may be furnished for review are not a substitute for a party's active conduct of its own due diligence to determine these and other matters of significance to such party. Broker will not investigate or verify any such matters or conduct due diligence for a part unless otherwise agreed in writing.

Any party contemplating or under contract or in escrow for a transaction is urged to verify all information and to conduct their own inspection and investigations including through appropriate third party independent professionals selected by such party. All financial data should be verified by the party including by obtaining and reading applicable documents and reports and consulting appropriate independent professionals. Broker makes no warranties and/or representations regarding the veracity, completeness, or relevance of any financial data or assumptions. Broker does not serve as a financial advisor to any party regarding any proposed transaction.

All data and assumptions regarding financial performance, including that used for financial modeling purposes, may differ from actual data or performance. Any estimates of market rents and/or projected rents that may be provided to a party do not necessarily mean that rents can be established at or increased to that level. Parties must evaluate any applicable contractual and governmental limitations as well as market conditions, vacancy factors and other issues in order to determine rent from or for the property. Legal questions should be discussed by the party with an attorney. Tax questions should be discussed by the party with a certified public accountant or tax attorney. Questions regarding the condition of the property and whether the property complies with applicable governmental requirements should be discussed by the party with appropriate engineers, architects, contractors, other consultants and governmental agencies. All properties and services are marketed by Broker in compliance with all applicable fair housing and equal opportunity laws.

Confidentiality Agreement

The contents included in this brochure are proprietary, paid for and include customized branded and/or trademarked materials that are to be kept strictly confidential. It is intended to be referred to only by the party receiving it from Broker. It should not be copied, duplicated, or otherwise made available to any other person, entity or competitor without the express written consent and approval of Broker. Any copying of proprietary material or brand will be a violation to your use of this brochure.

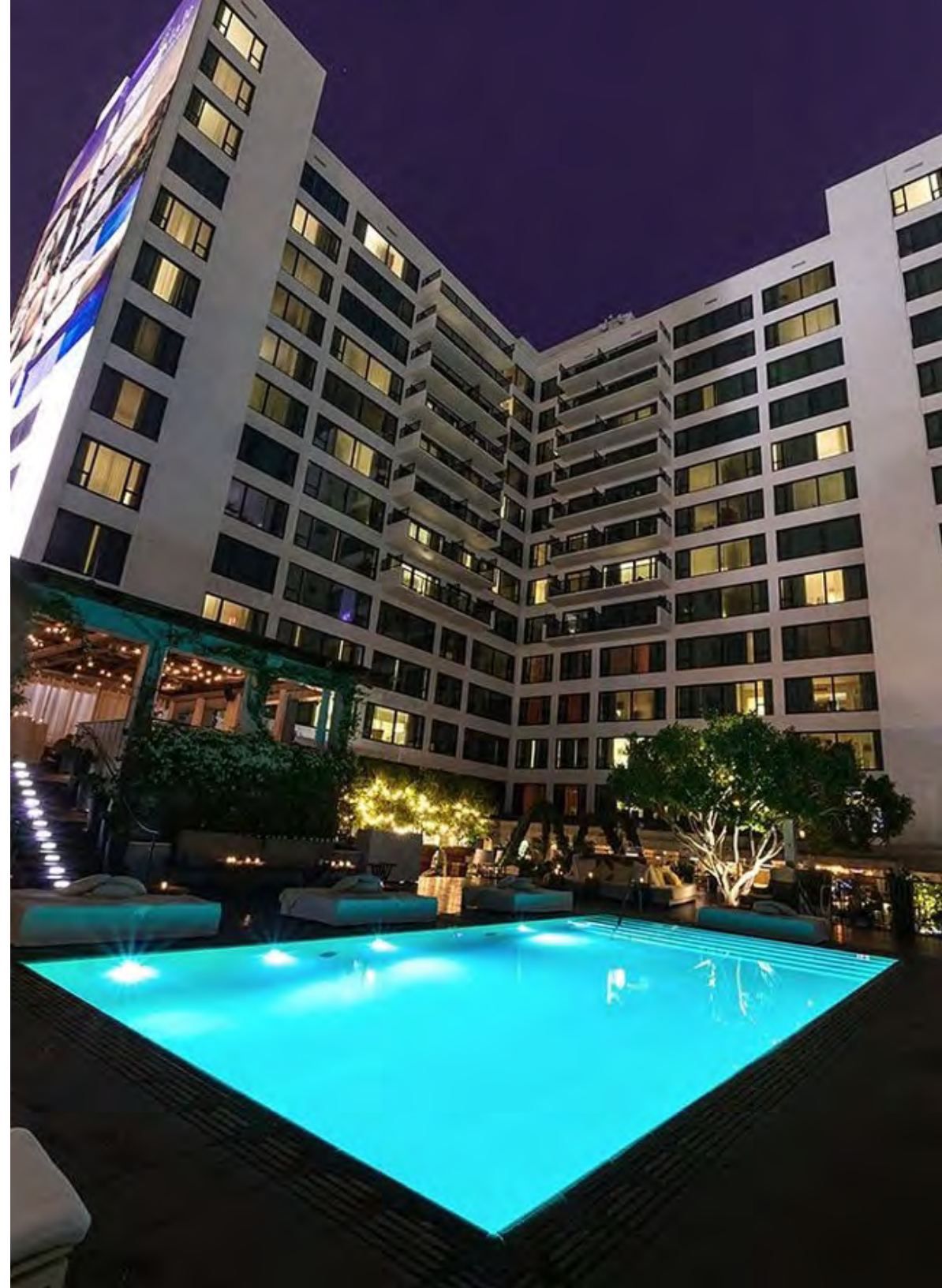




The Enclave

TABLE OF CONTENTS

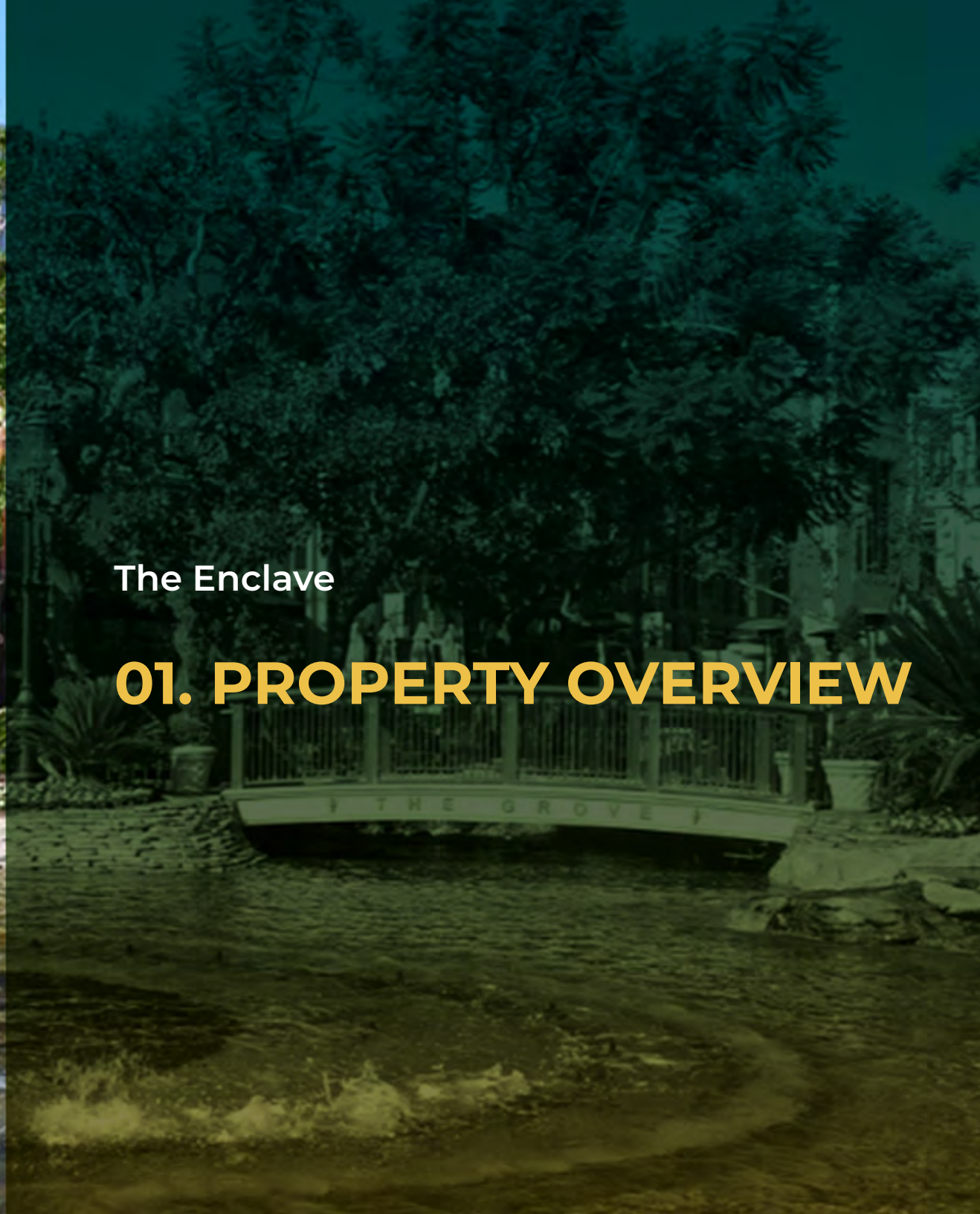
01. Property Overview
02. Financial Analysis
03. Area Overview





The Enclave

01. PROPERTY OVERVIEW

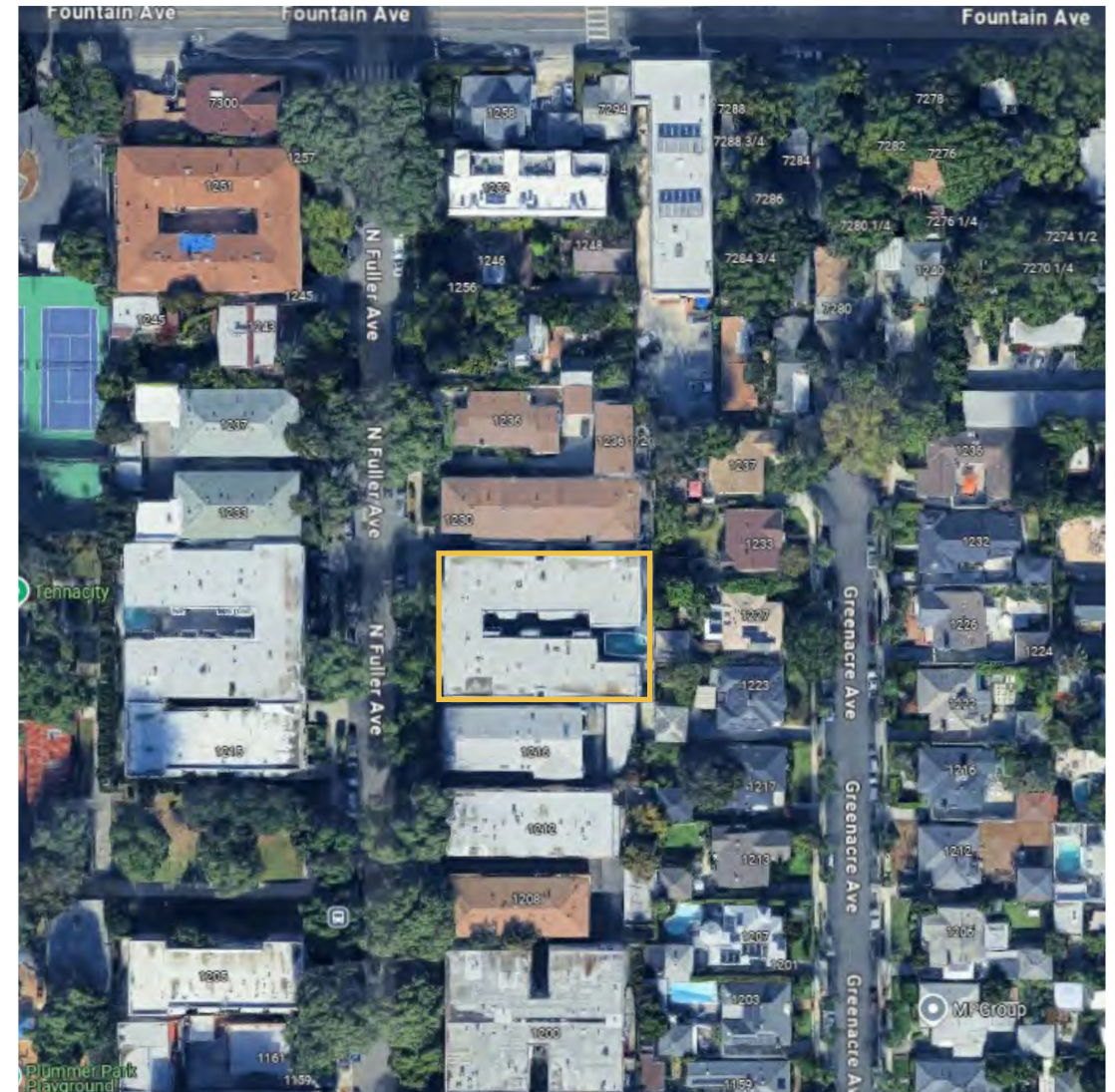




The Enclave

Property Overview

Street Address:	1226 N. Fuller Ave.
City:	West Hollywood
State:	California
Zip Code:	90046
APN:	5531-004-037
Rentable Square Feet:	± 17,468 SF
Lot Size:	± 14,858 SF
Year Built:	1964
Number of Units:	22
Number of Buildings:	1
Number of Stories:	2
Water:	Master-Metered
Electric:	Individually-Metered
Gas:	Individually-Metered
Construction:	Wood & Stucco
Roof:	Flat
Parking:	22 Gated Assigned Parking Spaces
Zoning:	WDR3B*
Unit Mix:	(19) 1 Bed/1 Bath (3) 2 Beds/2 Baths





The Enclave



Property Description

Lucrum Real Estate Group is proud to present The Enclave, located at 1226 North Fuller Avenue in the City of West Hollywood, California. This investment opportunity presents an ideal income property for an investor looking to acquire an attractively priced asset in a highly desirable sub-market of Los Angeles.

The Enclave is a highly improved and well-kept apartment complex comprised of (19) 1-Bedroom + 1-Bath and (3) 2-Bedroom + 2-Bath well-appointed units, totaling 17,468± BSF. It was built in 1964 and is located on a 14,858± SF lot, zoned WDR3B*.

Situated on a quiet and beautiful tree-lined street, The Enclave provides each of its tenants with an array of communal amenities, including secured intercom entry with 24-hour CCTV security cameras throughout, along with 22 gated assigned parking spaces, lush and mature landscaping, a sparkling swimming pool with outdoor lounge, and an on-site laundry facility.

In addition, the property features (8) massive unutilized 6' x 16' walk-in storage rooms that the current ownership has yet to monetize, allowing for the potential of an additional income stream.

1-Bedroom + 1-Bath Units:

There is a total of 19 one-bedroom units, with an average rent of \$2,026.



Current market rents for similar one-bedroom units in the area are hovering around \$2,500± providing a 23% rental upside. Several units have been renovated with laminate wood floors, granite countertops, and a stainless-steel appliance package. In addition to those upgrades, unit amenities also include air conditioning, microwave, dishwasher, range oven, and balconies or patios.

2-Bedroom + 2-Bath Units:

There is a total of (3) two-bedroom units, with an average rent of \$2,430. Current market rents for similar 2-bedroom units in the area are averaging \$2,995± for a 23% rental upside potential. Several units have been renovated with laminate wood floors, granite countertops, a stainless-steel appliance package, and renovated bathrooms. In addition to those upgrades, unit amenities also include air conditioning, microwave, dishwasher, range oven, and balconies or patios.

Location Description

Nestled between the glitz of Beverly Hills and the star-studded allure of Hollywood, West Hollywood—affectionately known as WeHo—stands out as a bold, creative, and dynamic city. It's a place where sophistication meets edge, where the streets pulse with life.

West Hollywood is more than just a neighborhood; it's a lifestyle. Its iconic streets—like the bustling Sunset Strip, the high-fashion hub of Melrose Avenue, and the historic Santa Monica Boulevard—are alive

with activity day and night. From world-famous music venues and chic rooftop bars to vintage shops and cutting-edge galleries, there's always something to explore. The city's size—just under two square miles—makes it wonderfully intimate. Locals often describe it as a place where big-city excitement meets the warmth of a small-town community.





WeHo has long been a haven for artists, visionaries, and free spirits. Its vibrant LGBTQ+ community has shaped much of the city's identity, fostering a welcoming and inclusive atmosphere that's celebrated in events like the West Hollywood Pride Festival and the Halloween Carnival. Street art, public murals, and avant-garde installations can be found throughout the city, adding splashes of creativity to its urban canvas.

Life in West Hollywood is stylish, comfortable, and distinctly Californian. Apartments and condos here often blend mid-century charm with modern luxury. Tree-lined streets are dotted with cozy cafes, trendy restaurants, and boutique gyms, making it easy to balance indulgence with wellness. West Hollywood is also one of the most walkable cities in Southern California, meaning everything you need is just steps away.

For nature lovers, the city offers lush escapes like West Hollywood Park and Plummer Park, and the nearby Hollywood Hills provide hiking trails with panoramic views of Los Angeles.

As the sun sets, West Hollywood transforms into a playground for night owls. The legendary Sunset Strip is home to iconic venues like The Roxy, The Viper Room, and The Comedy Store, where generations of artists and comedians have made history. Meanwhile, Santa Monica Boulevard offers a lively mix of LGBTQ+ clubs and bars that draw visitors from around the globe.

West Hollywood's charm lies in its balance of old-school glamour and contemporary cool. Whether it's sipping cocktails at a rooftop bar with city skyline views, strolling past art-deco landmarks, or indulging in some of the best dining and shopping in LA, West Hollywood exudes a sense of effortless sophistication.





The Enclave

Property Highlights

- + Prime multifamily investment offered at an attractive 5.65% cap rate
- + (19) 1-bedroom + 1-bath & (3) 2-bedroom + 2-bath units
- + 23% rental upside potential
- + (22) gated assigned parking spaces
- + (8) massive unutilized 6' x 16' walk-in storage rooms
- + Secured intercom entry and CCTV security system
- + Select units offering spacious balconies and or private patios
- + Community amenities include a swimming pool, outdoor lounge, and onsite laundry
- + Select units have been renovated and offer a stainless steel package
- + Each unit is cable-ready and provides air conditioning and heating



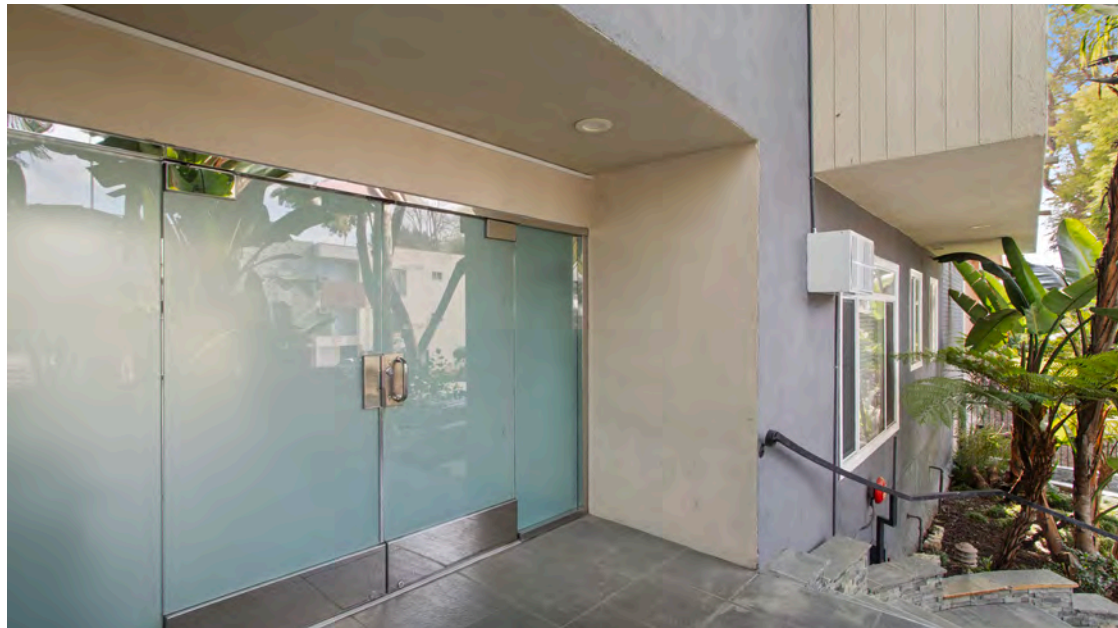


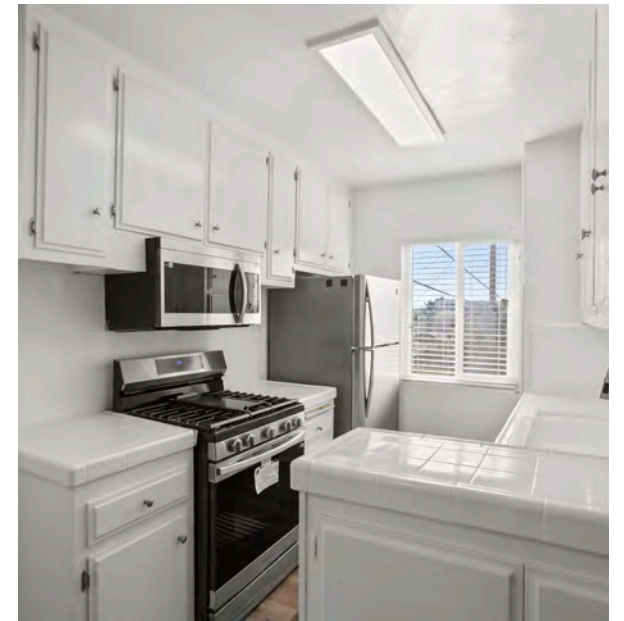
The Enclave

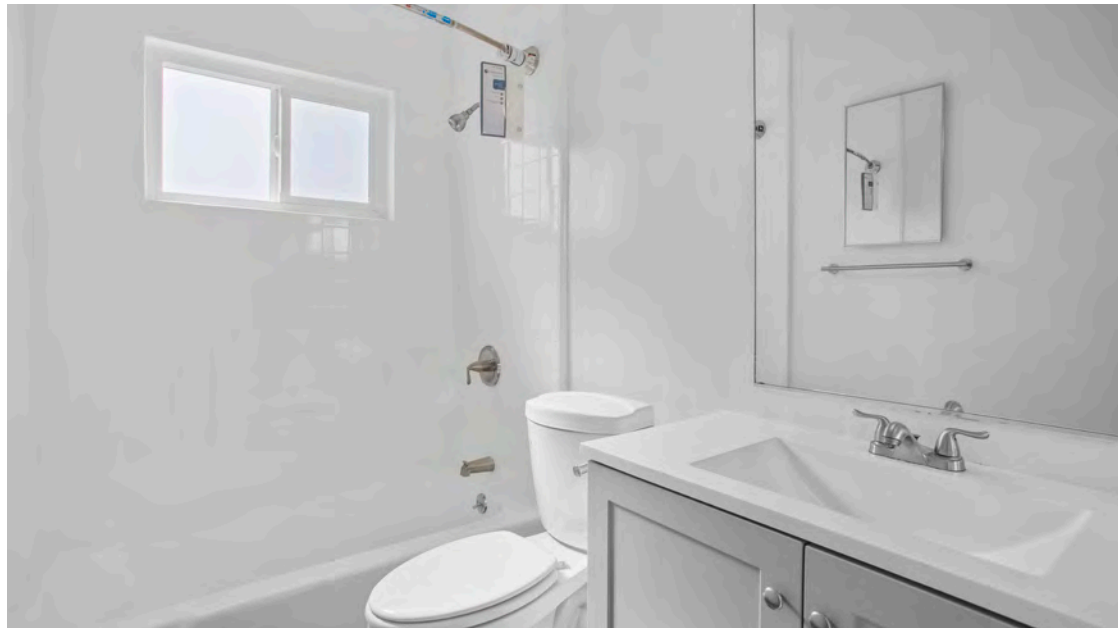
Location Highlights

- + Located directly across the street from Plummer Park and farmer's market
- + The property is situated on a quiet tree-lined street with low traffic
- + Located 1-block from the world-famous Sunset Strip
- + An amazing walk score of (94) "Walkers Paradise"
- + Only a step from fantastic restaurants, amazing nightlife, and chic retailers
- + Minutes drive to Beverly Hills, Hollywood, and Hancock Park

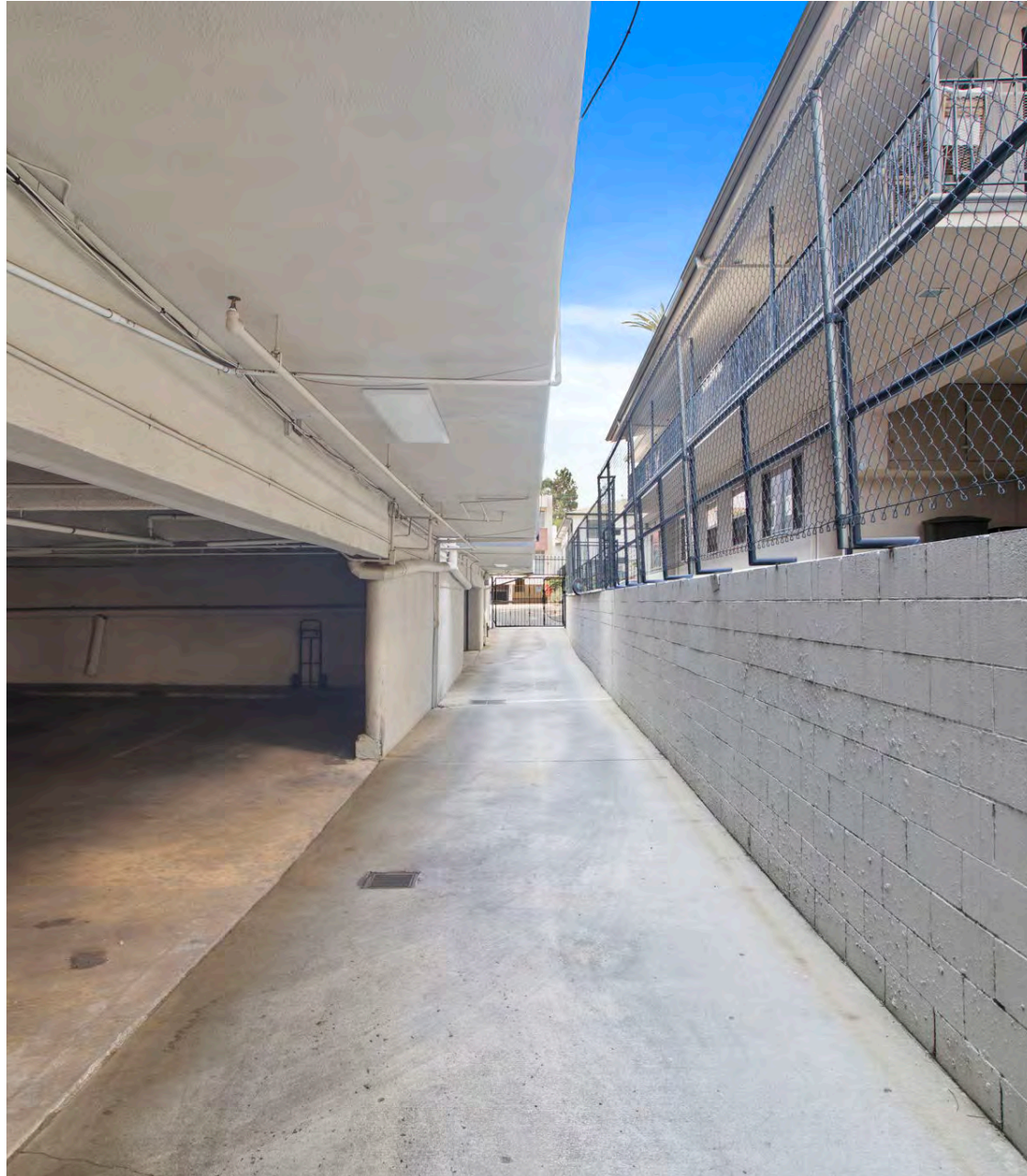








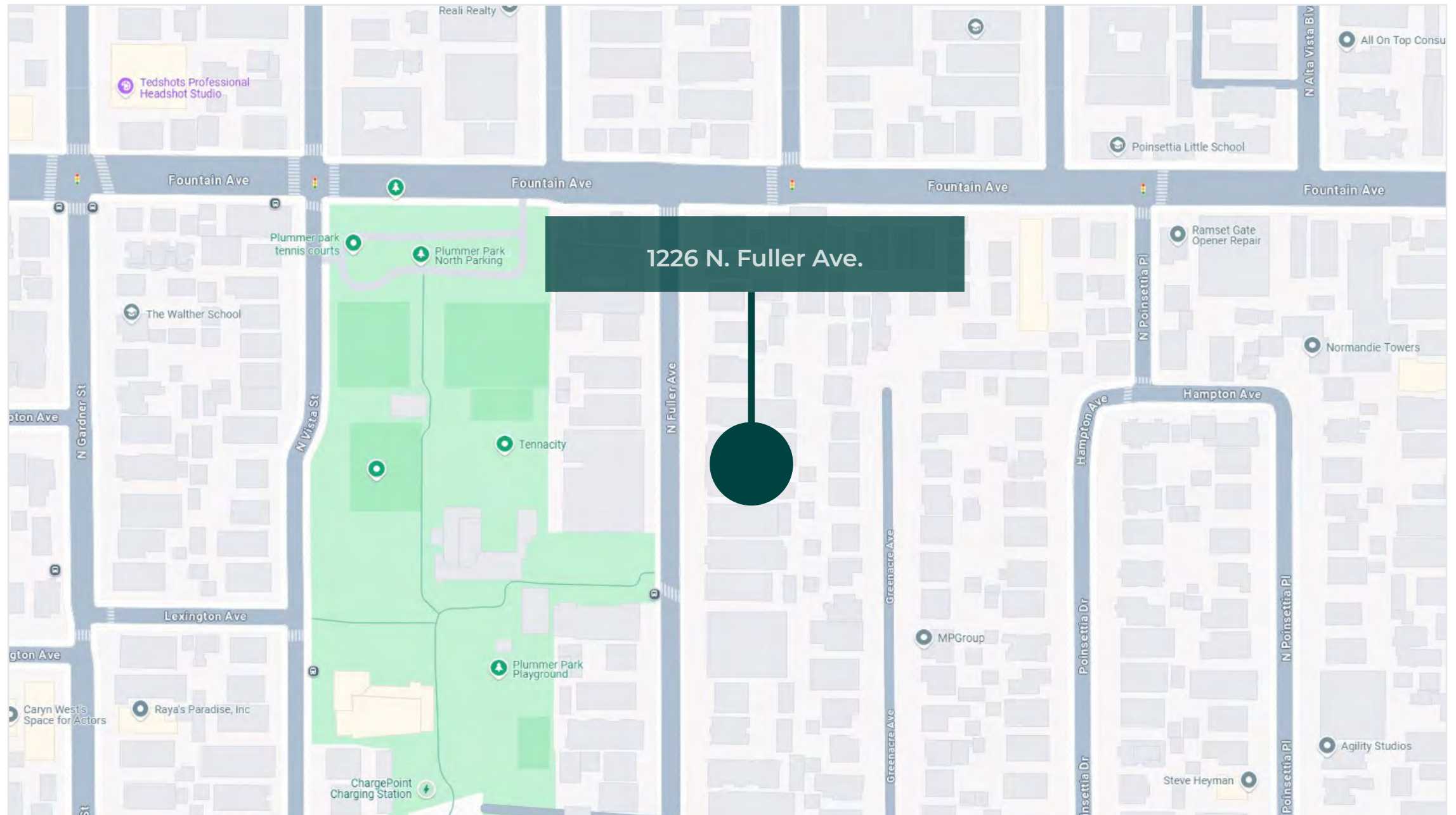








Street Map



Satellite Map (3D)





The Enclave

02. FINANCIALS



Financials **Pricing Details**

Price	\$5,775,000
Number of units	22
Price per unit	\$262,500
Price per Square Foot	\$330.60
Gross Square Footage	± 17,468
Lot Size	± 14,858 SF
Year Built	1964

Returns	Current	Pro Forma
Cap Rate	5.65%	8.02%
GRM	10.41	8.30

Rent Roll Summary

# of Units	Unit Type	AVG Current	Pro Forma
19	1 Bed + 1 Bath	\$2,026	\$2,500
3	2 Beds + 2 Baths	\$2,430	\$2,995



Financials Operating Data

Annual Income		Current		Pro Forma
Scheduled Gross Income		\$554,739		\$695,952
Less: Vacancy/Deductions	3.00%*	(\$16,642)	3.00%*	(\$20,879)
Gross Operating Income		\$538,097		\$675,073
Less: Expenses	38.18%*	(\$211,789)	30.43%*	(\$211,789)
Net Operating Income		\$326,309		\$463,285
Less Debt Service		(\$261,758)		(\$261,758)
Pre-Tax Cash Flow	3.02%**	\$64,551	9.43%**	\$201,527
Plus Principal Reduction		\$44,678		\$44,678
Total Return Before Taxes	5.11%**	\$109,229	11.52%**	\$246,205
Expenses				
Real Estate Taxes				\$72,188
Insurance				\$26,027
Utilities				\$20,170
Rubbish				\$3,152
Maintenance & Repairs				\$22,111
Misc				\$9,600
On-Site Management				\$31,107
Off-Site Management				\$27,434
Total Expenses				\$211,789
Per Square Foot				\$12.12
Per Unit				\$9,626.76

* As a percentage of Scheduled Gross Income.

** As a percentage of Down Payment.



Financials **Rent Roll**

#	Unit Type	SF	Rent	Rent Per SF	Pro Forma Rent	Pro Forma Rent Per SF	Note
1	2 Beds/2 Baths	--	\$2,725.00	--	\$2,995.00	--	--
2	1 Bed/1 Bath	--	\$2,325.00	--	\$2,500.00	--	--
3	1 Bed/1 Bath	--	\$2,243.47	--	\$2,500.00	--	--
4	1 Bed/1 Bath	--	\$1,606.31	--	\$2,500.00	--	--
5	1 Bed/1 Bath	--	\$2,137.89	--	\$2,500.00	--	--
6	1 Bed/1 Bath	--	\$2,500.00	--	\$2,500.00	--	Manager
7	1 Bed/1 Bath	--	\$1,344.60	--	\$2,500.00	--	--
8	1 Bed/1 Bath	--	\$2,349.04	--	\$2,500.00	--	--
9	1 Bed/1 Bath	--	\$1,075.95	--	\$2,500.00	--	--



Financials **Rent Roll**

#	Unit Type	SF	Rent	Rent Per SF	Pro Forma Rent	Pro Forma Rent Per SF	Note
10	1 Bed/1 Bath	--	\$2,085.11	--	\$2,500.00	--	--
11	1 Bed/1 Bath	--	\$2,137.89	--	\$2,500.00	--	--
12	2 Beds/2 Baths	--	\$1,888.71	--	\$2,995.00	--	--
12A	1 Bed/1 Bath	--	\$2,400.00	--	\$2,500.00	--	Vacant
14	1 Bed/1 Bath	--	\$1,660.42	--	\$2,500.00	--	--
15	1 Bed/1 Bath	--	\$1,230.00	--	\$2,500.00	--	Section 8
16	1 Bed/1 Bath	--	\$2,425.00	--	\$2,500.00	--	--
17	1 Bed/1 Bath	--	\$1,681.82	--	\$2,500.00	--	--
18	1 Bed/1 Bath	--	\$2,317.37	--	\$2,500.00	--	--



Financials **Rent Roll**

#	Unit Type	SF	Rent	Rent Per SF	Pro Forma Rent	Pro Forma Rent Per SF	Note
19	1 Bed/1 Bath	--	\$2,325.00	--	\$2,500.00	--	--
20	1 Bed/1 Bath	--	\$2,325.00	--	\$2,500.00	--	--
21	1 Bed/1 Bath	--	\$2,325.00	--	\$2,500.00	--	--
22	2 Beds/2 Baths	--	\$2,675.00	--	\$2,995.00	--	--
	Totals	--	\$45,783.58	--	\$56,485.00	--	--



Financials **Rent Roll**

Other Income	--	Monthly Income	--	Pro Forma Income	--	Note
Laundry Income	--	\$334.00	--	\$600.00	--	--
Rent Registration Reimbursement	--	\$111.00	--	\$111.00	--	--
Storage Rooms	--	--	--	\$800.00*	--	--
Total Other Income	--	\$445.00	--	\$1,511.00	--	--
Monthly SGI	--	\$46,228.58	--	\$57,996.00	--	--

*Per the City of West Hollywood, Municipal Code: 17.32.090, "Side Agreements" are Prohibited and a landlord cannot create a separate side agreement and charge for parking or storage but can offer it either as a free amenity or in the main lease agreement by adding it to the total rent. The Proforma Storage Room Income outlined in the marketing material is an assumption based upon the possibility of achieving higher base rents for units that come with storage.



Financials **Loan Options**

Indicative Loan Pricing	The Enclave
Loan Product	3 Years Fixed
Loan Amount	\$3,638,250
Fixed	3 Years Fixed
Amortization	30 Years
Interest Only Period	30 Years
Prepay	--
Rate Lock Period	--
Minimum Debt Coverage Ratio	--
Max Loan to Value	63%
Debt Coverage Ratio as Underwritten	--
Estimated Interest Rate	6.00%
Approximate Annual Payment	\$261,758
Approximate Annual Payment (IO)	--

Loan Assumption Information: *Potential to assume short term existing debt at a rate of 4.34%. Please inquire within for more information.

The interest rates listed above and any spreads derived there from are subject to market influences, which may impact loan proceeds. All terms are subject to review and approval by the lender and are subject to change until rate/spread lock. This analysis is based upon information provided by Convoy Capital. Final terms and conditions are subject to change. | March 2025.



The Enclave

03. AREA OVERVIEW

Points of Interest





The Enclave

Points of Interest



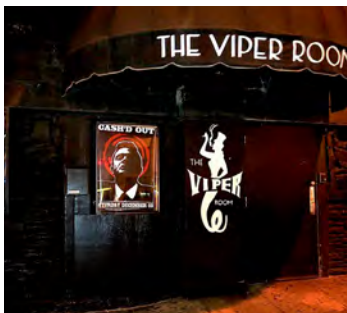
Plummer Park (0.2 Miles)

Plummer Park in West Hollywood covers 10 acres and offers tennis courts, a playground, green spaces, community gardens, and historic buildings like Fiesta Hall and the Great Hall. It's a popular destination for recreation and community events.



Chateau Marmont (1.4 Miles)

The Chateau Marmont, located on Sunset Boulevard, is a historic luxury hotel built in 1929, known for its old-Hollywood charm and celebrity-favored ambiance. Modeled after a French castle, it's synonymous with Hollywood's glamorous and scandalous history.



The Viper Room (2.2 Miles)

The Viper Room, located on the Sunset Strip, is a legendary nightclub that opened in 1993. Cofounded by Johnny Depp, it became a hotspot for rock stars and celebrities, known for its intimate atmosphere and live music performances.



The Abbey (2.5 Miles)

The Abbey Food & Bar in West Hollywood is a renowned LGBTQ+ nightlife destination, known for its vibrant atmosphere and inclusivity. Founded in 1991 by David Cooley as a small coffeehouse, it has since expanded into a large venue with bars, dance floors, and a stylish outdoor patio.



Mondrian Hotel (1.5 Miles)

The Mondrian is a chic, contemporary hotel known for its innovative design and stunning city views. Featuring luxury with a modern aesthetic, it's a hotspot for travelers and locals, home to the popular Skybar, an open-air lounge with vibrant nightlife.



The Comedy Store (1.6 Miles)

The Comedy Store, established in 1972 by Mitzi Shore, is one of the world's most iconic comedy clubs. It's launched countless legendary comedians, including Richard Pryor, Robin Williams, and Dave Chappelle, known for its intimate, electric atmosphere.



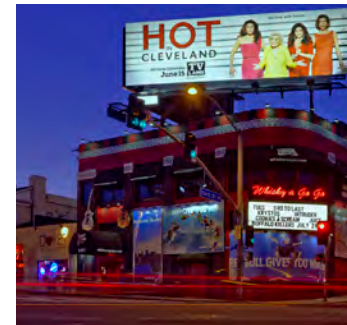
The Enclave

Points of Interest



The Grove (1.9 Miles)

The Grove is a popular outdoor shopping and entertainment complex in Los Angeles, opened in 2002. Featuring upscale retailers, dining, and entertainment, it's known for its pedestrian-friendly design, central fountain, and historic trolley.



Whiskey a Go Go (2.3 Miles)

Whisky a Go Go, opened in 1964 on the Sunset Strip, is a legendary nightclub that helped shape LA's rock scene. Known for its intimate vibe and iconic history, it has hosted major acts like The Doors, The Byrds, and Led Zeppelin.



Demographics

West Hollywood, Los Angeles, CA

West Hollywood, often referred to as WeHo, is a vibrant, upscale city located in the heart of Los Angeles County. Known for its lively arts and entertainment scene, historic landmarks, and trendy shopping and dining options, West Hollywood is a prime destination for both residents and visitors. Its central location between Beverly Hills and Hollywood makes it a highly desirable area for real estate, with a unique blend of residential, commercial, and cultural spaces.

QUICK FACTS:

+ Home to world-famous nightlife spots, including the Sunset Strip, known for its music venues and celebrity hotspots.

- + West Hollywood is considered one of the most walkable neighborhoods in Los Angeles, with vibrant shopping districts and dining options.
- + Known for its strong LGBTQ+ community, West Hollywood hosts the annual LA Pride Festival and Parade.
- + West Hollywood boasts a mix of luxury condos, trendy apartments, and high-end commercial properties, making it a coveted area for investment.



Average Household
Income

\$121,960



Median Age

40 years old



2021 Estiamted
Population

35,358



Total Households

22,836



Bahcelors Degree
or Higher

61.47%



Overview

Los Angeles, California

The Los Angeles Metro Rail is an urban rail transportation system serving Los Angeles County, California. It consists of six lines, including two subway lines and four light rail lines serving 93 stations. It connects with the Metro Busway bus rapid transit system and also with the Metrolink commuter rail system.



The City of Los Angeles holds many distinctions. L.A. is the entertainment capital of the world, a cultural mecca boasting more than 100 museums, and a paradise of idyllic weather. From tourist attractions like the Walk of Fame's collection of stars (numbering more than 2,614 and growing by one or two a month) to career opportunities like those presented in the expanding tech industry, Los Angeles is the place to be. It is the only city in North America to have hosted the Summer Olympics twice. Downtown L.A. is the largest government center outside of Washington, D. C. Los Angeles has the only remaining wooden lighthouse in the state (located in San Pedro's Point Fermin Park) and the largest historical theater district on the National Register of Historic Places (located Downtown on Broadway).

Los Angeles is on the leading edge of several growth industries. LA County, with more than 87,000 jobs in the fashion industry, has surpassed New York's fashion district workforce. The LA Five-County area also has more than 700,000 people at work in health services / biomedical activities and 190,000 people in aerospace and technology.





Investment Contacts

Raymond A. Rodriguez IV

Founding Partner

D: +1 866-582-7865

M: +1 818-581-5829

ray@lucrumre.com

Lic. #01402283

Matt Freedman

Partner

D: +1 818-755-5551

M: +1 818-585-6888

matt@lucrumre.com

Lic. #01487954

